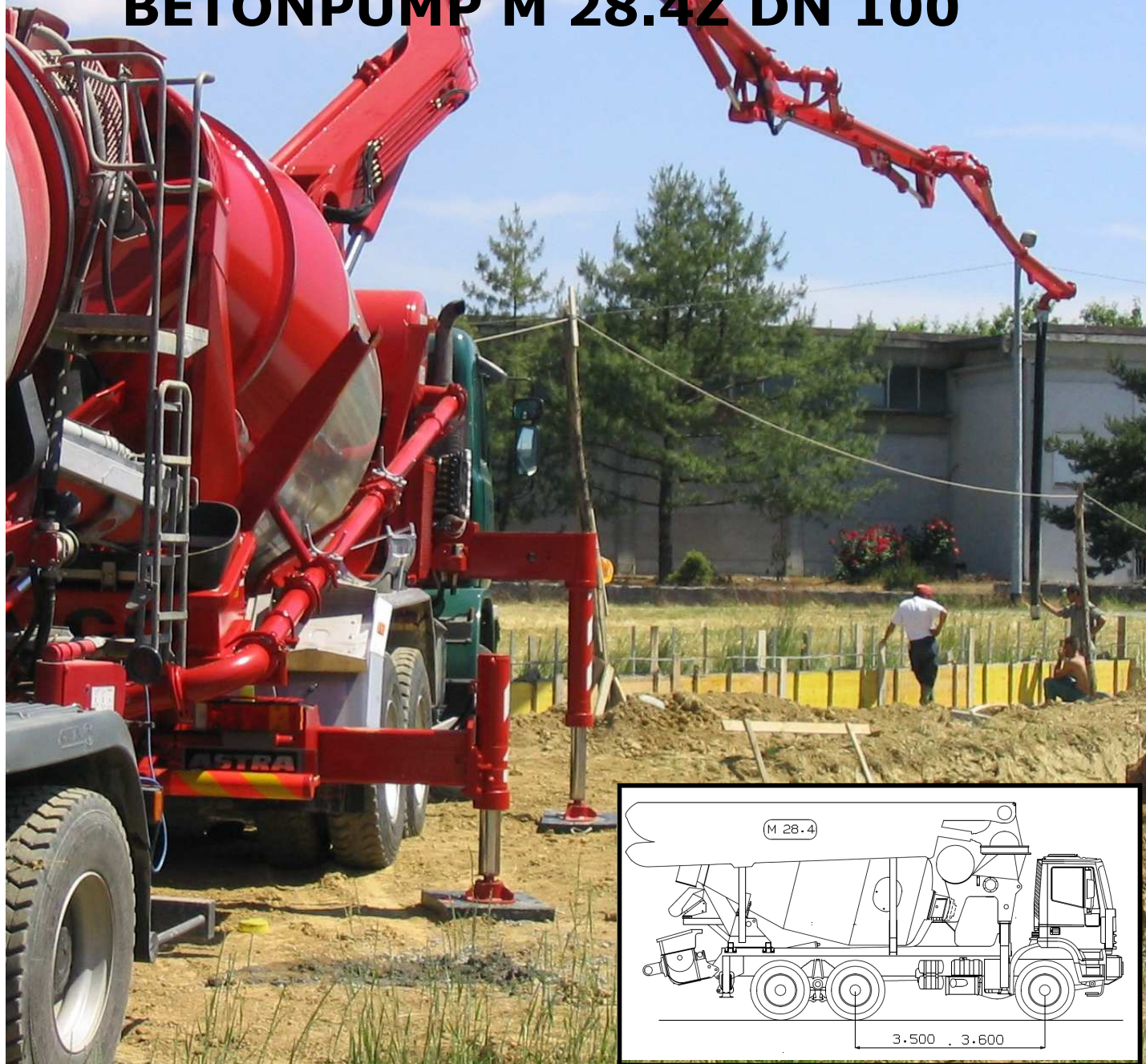




# BETONPUMP M 28.4Z DN 100

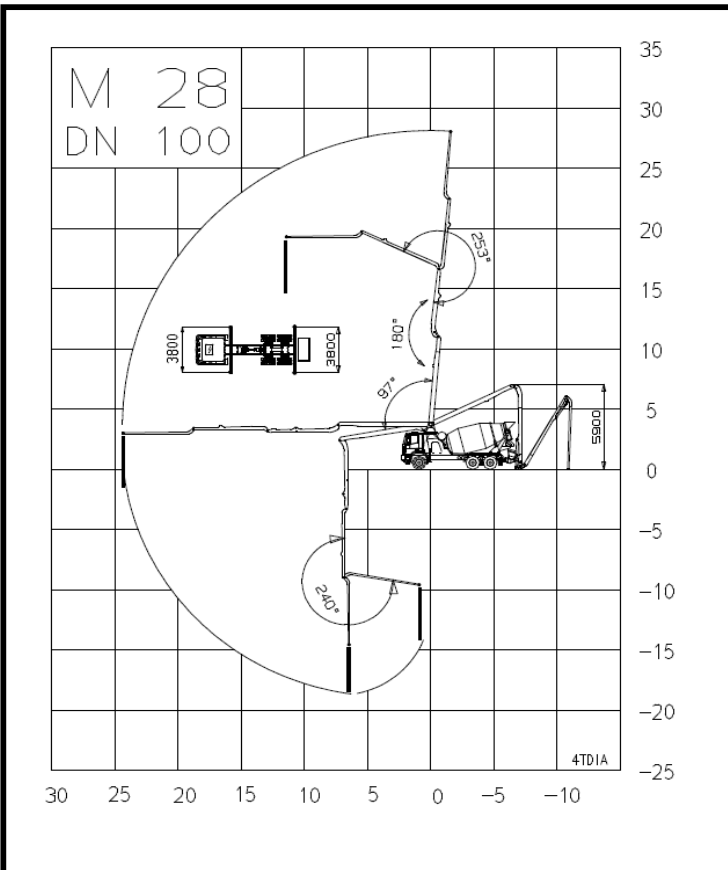


## Main features

- To be installed on 3 or 4 axles trucks.
- One body frame to bear efficiently the torsional effects.
- Mixer off-centre for a better balance with full charged concrete mixer.
- Front and back hydraulic outriggers with minimum floor space.
- Boom M 28 - 4 elements Z opening with pipeline 100 mm diameter.
- Control of the boom elements in multiple and proportional way.
- Proportional control of the concrete output .
- Safety valves directly flanged on all the cylinders of the boom.
- With power take off from the truck.
- Concrete pipes with large radius elbows and without shaped pipes.

## Standard features

- Proportional radio remote control.
- Electric vibrator on the hopper / light on the hopper
- Automatic grease lubrication system for pumping group.
- Oil automatic lubrication for pumping pistons.
- Syntetic plates for the four outriggers with storage.
- Accessories for cleaning and washing / automatic concrete level probe
- Display with diagnostic and settings.



## Boom M 28

Boom type 4 elements opening lower Z  
 max vertical reach 27,2 m  
 max horizontal reach 23,3 m min.  
 opening height 5,9 m

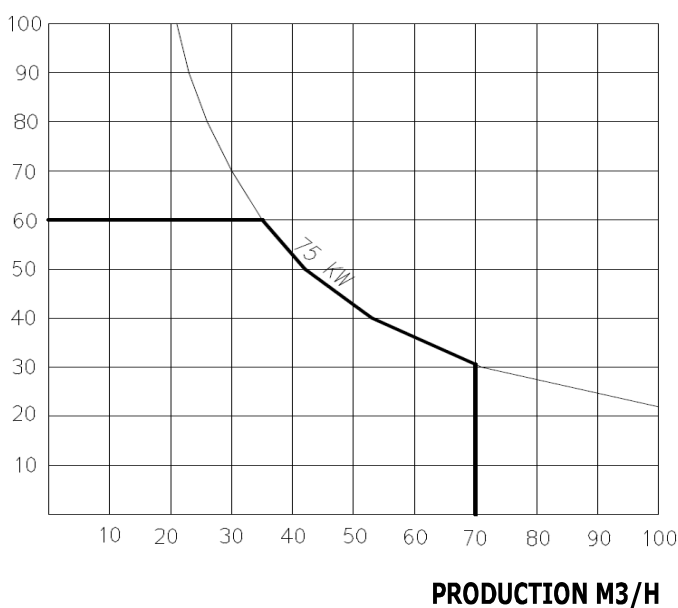
## Angle of rotation

I° element	97°
II° element	180°
III° element	253°
IV° element	240°
base rotation	370°

## Technical data

Outriggers	4 hydraulic drive
Base stabilization	3,8 / 3,8 m
Pipeline diameter	100 mm
Lenght end hose	3,5 m
Rotation speed	0,3 rev/min
Max. hydraulic pressure	320 bar
Cubic capacity hydraulic pump	20 cc

## PRESSURE ON CONCRETE BAR



## Pumping group 2010

### Technical data

Production per hour	70 m3/H
Pressure on concrete	60 bar
Max. cycles	36 min-1
Pumping cylinders	2 with "S" valve
Cylinders size	200x1000 mm
Hopper capacity	0,450 M3
Mixer speed	20 min-1
Water tank	800 L
Type hydraulic pump	pistons pump
diam. pipe way out hopper	6"
drum capacity	9 m3

### Truck

Indicative total	
weight equipment	12,5ton
Assembling on frames	3 axles
Min. wheelbase	3.500 mm
PTO ratio	1:26-1:1,55 / 900-2000 Nxm