

CE



Pump M 36 5Z



Standard features

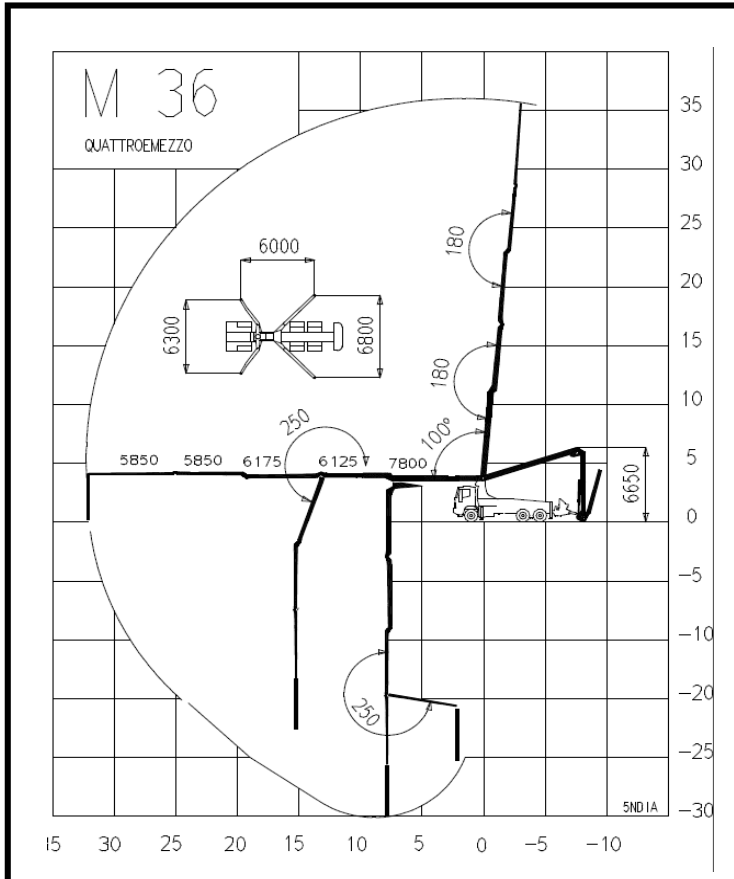
- Proportional radio remote control.
- Electric vibrator.
- Automatic grease lubrication system for pumping group.
- Oil automatic lubrication for pumping pistons.
- Syntetic plates for the four outriggers.
- Light on the hopper.
- Accessories for washing.

Optional

- Complete pipeline in twin pipe.
- Continuous rotation of the boom.
- Independent diesel engine.

Main features

- One body frame to bear efficiently the torsional effects.
- Front and back hydraulic outriggers with minimum floor space.
- Boom 36 mt at 5 sections with opening outriggers at Z , diameter pipeline 125-112
- Control of the boom elements in multiple and proportional way.
- Proportional control of the concrete output .
- Safety valves directly flanged on all the cylinders of the boom.
- Power take off from the truck , or in option with diesel engine separate.
- Concrete pipes with large radius elbows and without shaped pipes.



Boom M 36.5

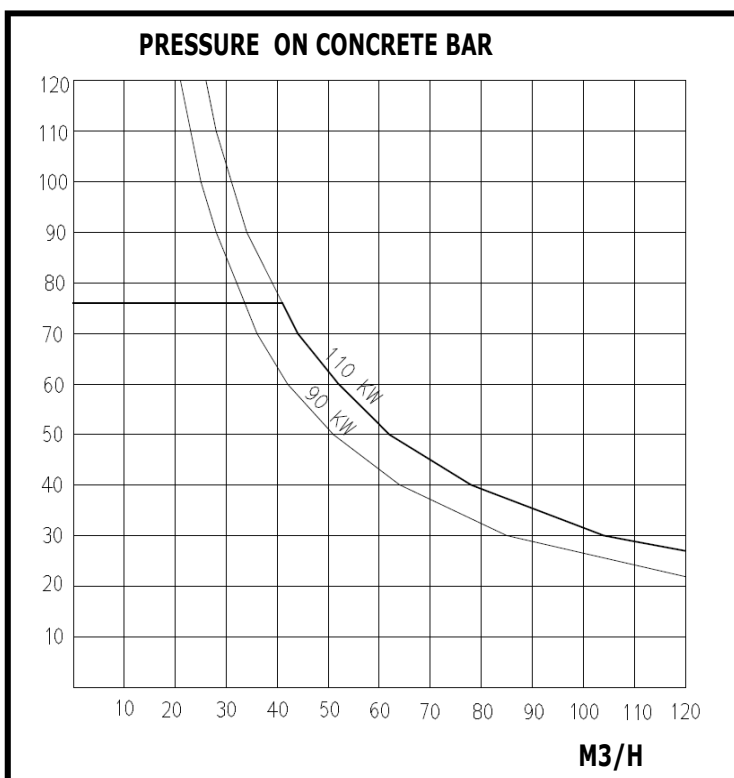
Type of the boom	5 elements at lower Z
Vertical height	36 m
max. horizontale reach	32,2 m
Opening height	6,7 m

Rotation angles

1° element	100°
2° element	180°
3° element	250°
4° element	180°
5° element	250°
Base rotation	370°

Technical data

Outriggers	4 hydraulic drive
Base stabilisation	6.3 / 7,5 m
Diam. pipeline	125 -112 mm
Lenght end hose	4 m
Rotation speed	0,3 rev/min
Max hydraulic pressure	350 bar
Cubic capacity hydraulic pump	30 cc
Voltage electrical plant	24 Volt



Pumping group 2315

Technical data

Production per hour	130 M3/H
Pressure on concrete	76 bar
Max. cycles	35 min-1
Pumping cylinders	2 with "S" valve
Diam. cylinders	230X1500 mm
Hopper capacity	0,5 M3
Speed of the mixer	20 min-1
Water tank	1200 L
Type hydraulic pump	Pistons pump
Diam. Pipeline hopper way out	7"

Truck (minimum requirements)

Indicative total weight equipment 16-17 ton
 Assembling on chassis 3 axles wheelbase 3800
 or 4 axles wheelbase 4.200
 PTO ratio 1:1.26 -1:1,55 / 900—2000 Nxm