

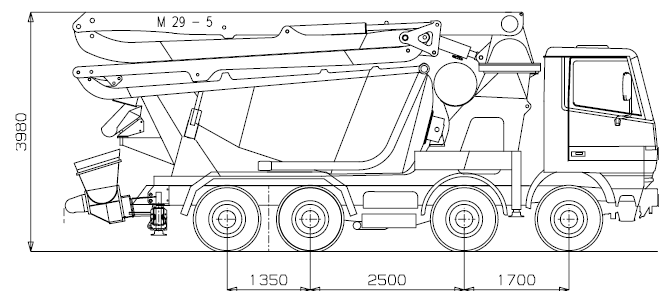


Betonpump M 29.4Z DN125



Standard

- Proportional radio remote control CANBUS.
- Possibility of manual emergency control of all functions
- Electric vibrator on the hopper.
- Oil automatic lubrication for pumping pistons.
- Syntetic plates for the four outriggers with storage.
- Light for hopper.
- Accessories for cleaning and washing.
- Probe to set automatically the concrete level in the hopper.
- Grease automatic lubrication system pumping group.
- Display with diagnostic and settings.

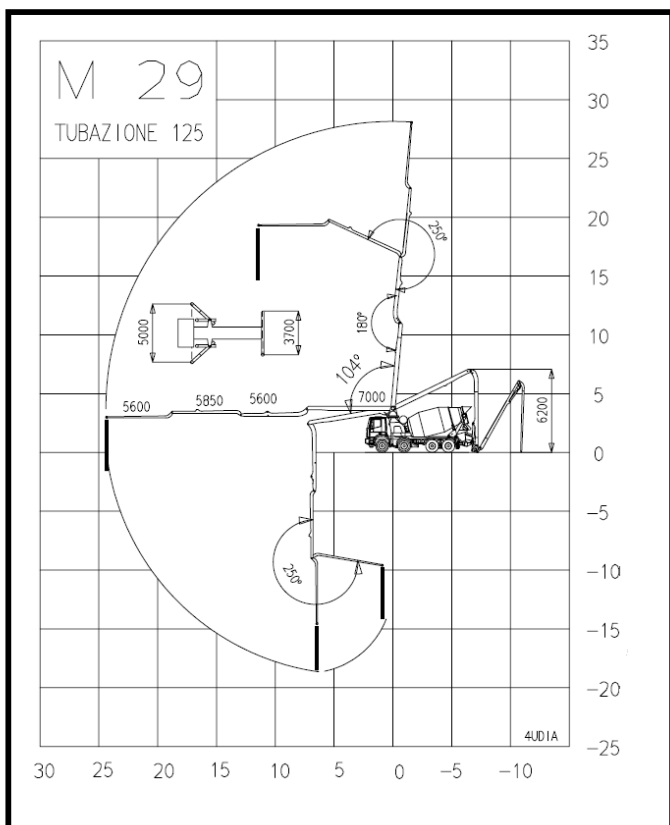


Main features

- To be installed on 4 axles trucks.
- One body frame to bear efficiently the torsional effects.
- Mixer off-centre for a better balance with full charged concrete mixer.
- Front and back hydraulic outriggers with minimum floor space.
- Boom M 29 - 4 elements Z opening with pipeline 125 mm diameter.
- Control of the boom elements in multiple and proportional way.
- Proportional control of the concrete output.
- Safety valves directly flanged on all the cylinders of the boom.
- Power take off from the truck.

Optional

- Pipers in twin pipe.
- Continuous rotation of the boom.



Boom M 29

Performance

Boom type	4 elements at lower Z
max vertical reach	28,1 m
max horizontal reach	24,4 m
min. opening height	6,2 m

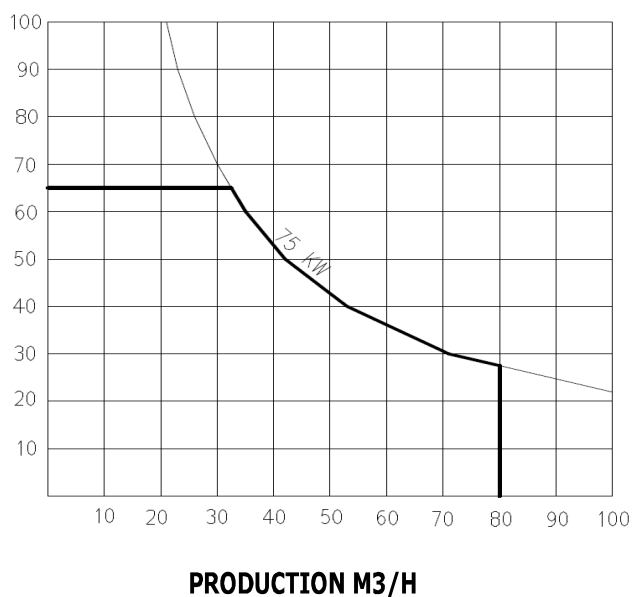
Angle of rotation

I° element	104°
II° element	180°
III° element	250°
IV° element	240°
base rotation	370°

Technical data

Outriggers	4 hydraulic drive
Base stabilisation	m 5/3,8
Pipeline diameter	mm 125
Lenght end hose	m 3
Rotation speed	rev/min 0,6
Max. hydraulic pressure	bar 320
Cubic capacity hydraulic pump	cc 20
Voltage electrical plant	V 24

PRESSURE ON CONCRETE BAR



Pumping group 2010 K

Technical data

Production per hour	80 m3/H
Pressure on concrete	60 bar Max.
cycles	42 min-1
Pumping cylinders	2 with "S" valve
Cylinders size	200x1000 mm
Hopper capacity	0,450 m3
Mixer speed	20 min-1
Water tank	800 L
Type hydraulic pump	axial pistons pump
diam. pipe way out hopper	6"
drum capacity	10m3

Truck

Indicative total	
weight equipment	14 ton
Assembling on frames	4 axles
wheelbase min.	4.200 mm
PTO ratio	1:1-1:1,29/900-2000 Nxm