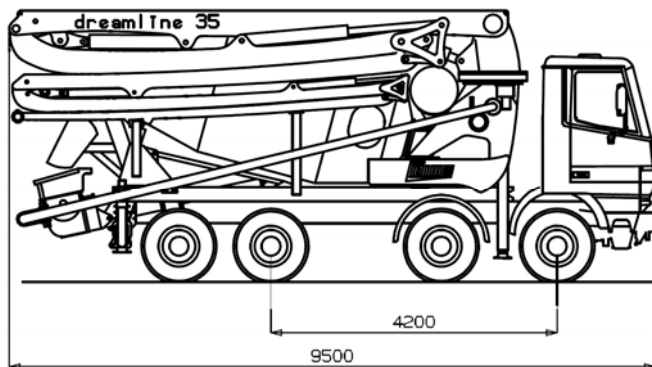




Betonpump M 35.5Z DN 100



Standard

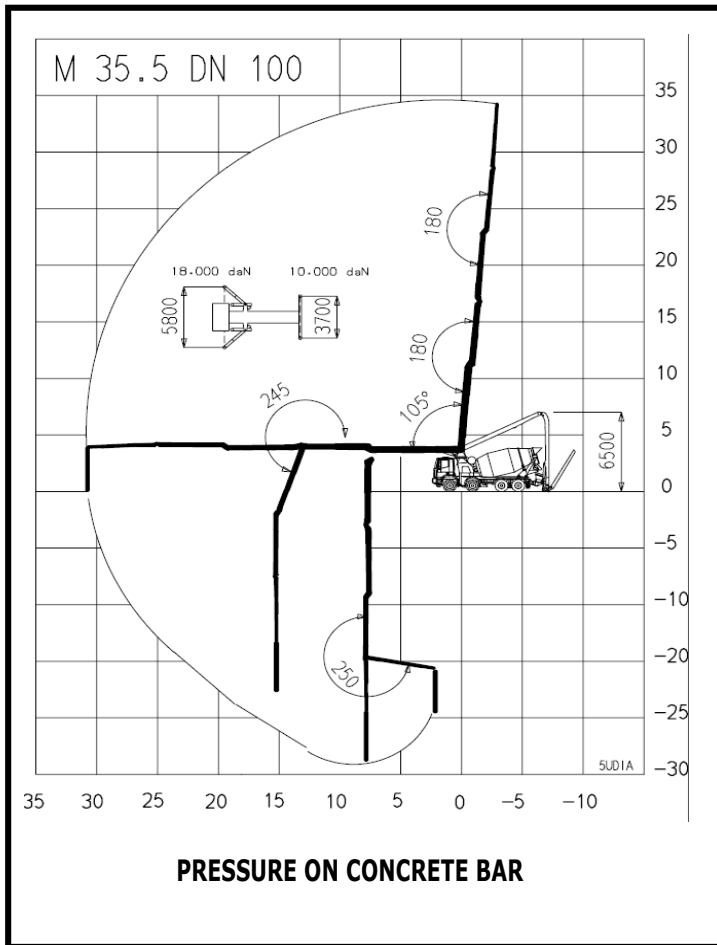
- Proportional radio remote control CANBUS.
- Electric vibrator on the hopper.
- Grease automatic lubrication on pumping group.
- Oil automatic lubrication for pumping pistons.
- Syntetic plates for the four outriggers with storage.
- Service light.
- Accessories for cleaning and washing.
- Probe to control automatically the concrete level in the hopper.
- Display with diagnostic and settings.

Main features

- To be installed on 4 axles trucks short wheelbase.
- One body frame to be very resistant to torsional effects.
- Mixer off-centre for a better balance with full loaded concrete mixer.
- Front adjustable outriggers and back hydraulic outriggers with minimum floor space.
- Boom M 35 - 5 elements with Z opening and pipeline 100 mm diameter.
- Control of the boom elements in multiple and proportional way.
- Proportional control of the concrete output.
- Safety valves directly flanged on all the cylinders of the boom.
- Available in PTO version.
- Concrete pipe with large radius elbows and without shaped pipes.

OPTIONAL

- Pipe in twin pipe.
- Continuous rotation of the boom.



Boom M 35

Boom main features

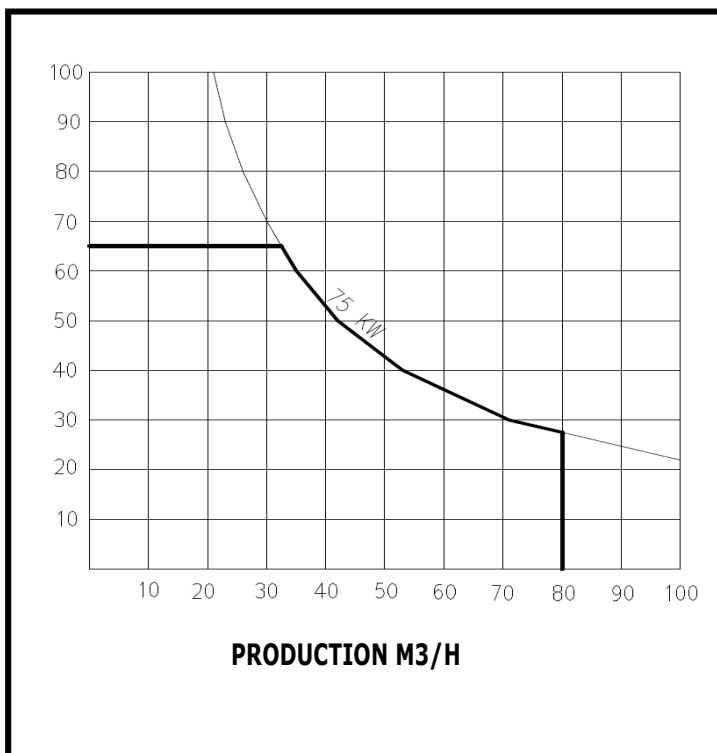
Boom type	5 elements lower Z
Vertical reach	34,2 m
Max horizontal reach	30,5 m
Min. opening height	6,5 m

Rotation angles

I° element	105°
II° element	180°
III° element	245°
IV° element	180°
V° element	250°
base rotation	370°

Tecnical data

Outriggers	4 hydraulic drive
Base stabilization	5,8 / 3,7 m
Pipeline diameter	100 mm
Lenght end hose	3,5 m
Rotation speed	0,3 rev/min
Max. hydraulic pressure	350 bar
Cubic capacity hydraulic pump	20cc
Voltage electrical plant	24 volt



Pumping group 2010

Technical data

Production per hour	80 m3/H
Pressure on concrete	65 bar
Max. cycles	42 min-1
Pumping cylinders	2 with "S" valve
Cylinders diam.	200 x 1000 mm
Hopper capacity	0,450 m3
Mixer speed	20 min-1
Water tank	800 lt
Type hydraulic pump	pistons pump
Exit hopper diameter	6"
Drum mixer	9m3

Truck

total weight equipment	14,8 tons
Assembling on truck:	4 axles -
wheelbase min:	4.200 mm
PTO ratio	1:1 -1:1,55 / 900—2000 Nxm