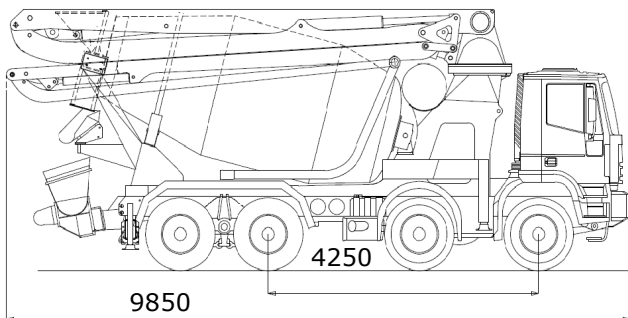




Betonpump M 31.4Z DN 100



Standard

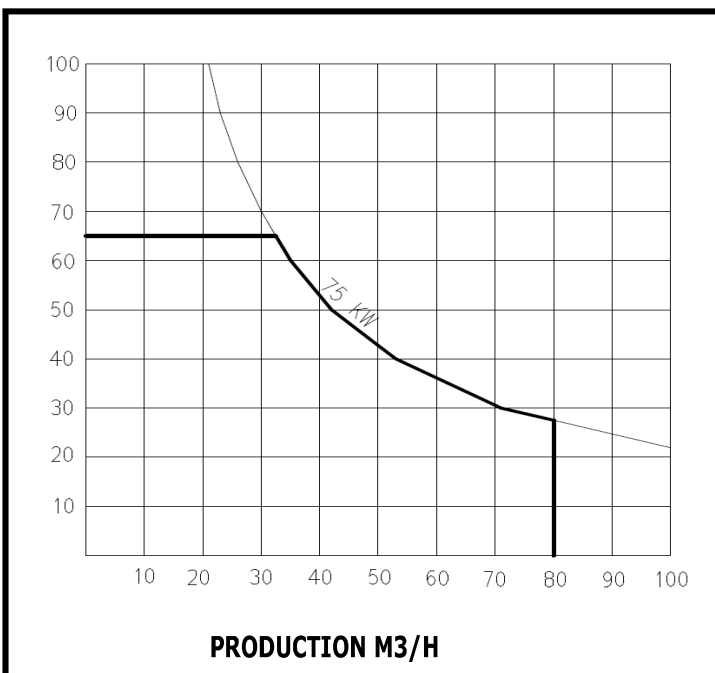
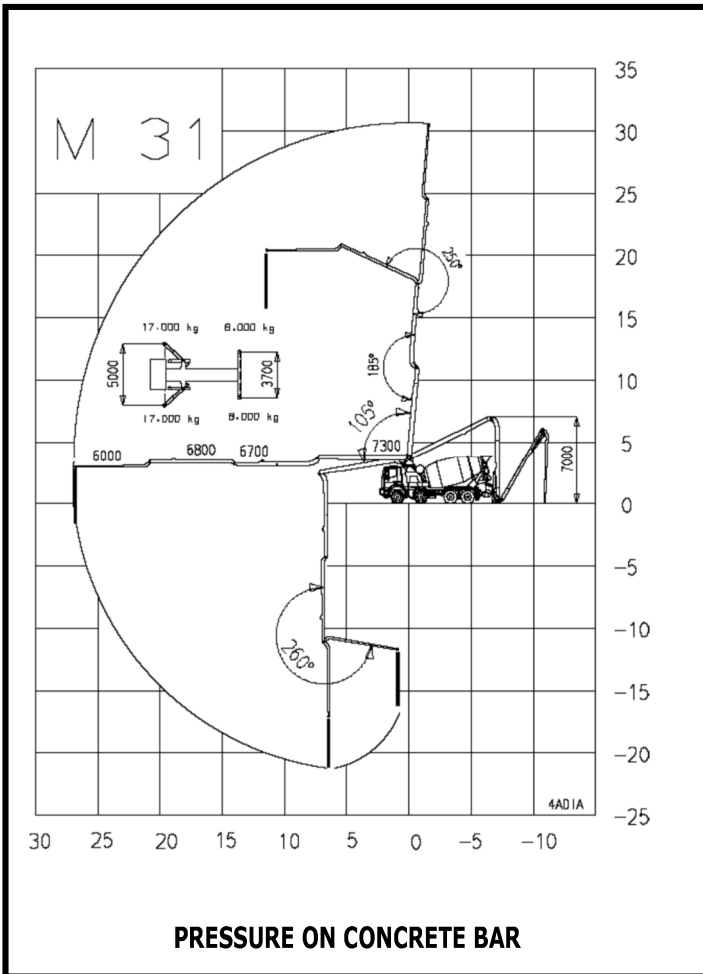
- Proportional radio remote control CANBUS.
- Electric vibrator on the hopper.
- Grease automatic lubrication on pumping group.
- Oil automatic lubrication for pumping pistons.
- Syntetic plates for the four outriggers with storage.
- Service light .
- Accessories for cleaning and washing.
- Probe to control automatically the concrete level in the hopper.
- Disply with diagnostic and settings.

Main features

- To be installed on 4 axles trucks short wheel-base.
- One body frame to be very resistant to torsional effects.
- Mixer off-centre for a better balance with full loaded concrete mixer.
- Front adjustable stabilisation and back extensible stabilisation with minimum floor space.
- Boom M 31 - 4 elements with Z opening and pipeline 100 mm diameter.
- Control of the boom elements in multiple and proportional way.
- Proportional control of the concrete output.
- Safety valves directly flanged on all the cylinders of the boom.
- Available in PTO version.

Optional

- ° Pipe in twin pipe.
- ° Continuous rotation of the boom.



Boom M 31

Boom type	4 elements at lower Z
Vertical reach	30,6 m
Max. orizontal reach	27 m
Min. opening height	7 m

Rotation angles

I° element	105°
II° element	180°
III° element	250°
IV° element	260°
base rotation	370°

Tecnical data

Outriggers	4 hydraulic drive
Base stabilization	5 / 3,7 m
Pipeline diameter	100 mm
Lenght end hose	3,5 m
Rotation speed	0,3 rev/min
Max. hydraulic pressure	320 bar
Cubic capacity hydraulic pump	20 cc
Voltage electrical plant	24 volt

Pumping group 2010

Technical data

Production per hour	80 m3/H
Pressure on concrete	65 bar
Max. cycles per minute	42 min-1
Pumping cylinders	2 with "S" valve
Cylinders diam.	200 x 1000 mm
Hopper capacity	0,450 m3
Hopper mixer speed	20 min-1
Water tank	800 liters
Type hydraulic pump	axial pistons pump
Diam. pipe exit elbow	6"
Drum mixer	10 m3

Truck

total weight equipment	14 tons
Assembling on truck:	4 axles -
wheelbase min	4.250 mm
Front axles	9 tons capacity
PTO ratio	1:1 -1:1,55 / 900—2000 Nxm