



Pump M 36 4Z DN 125



Standard features

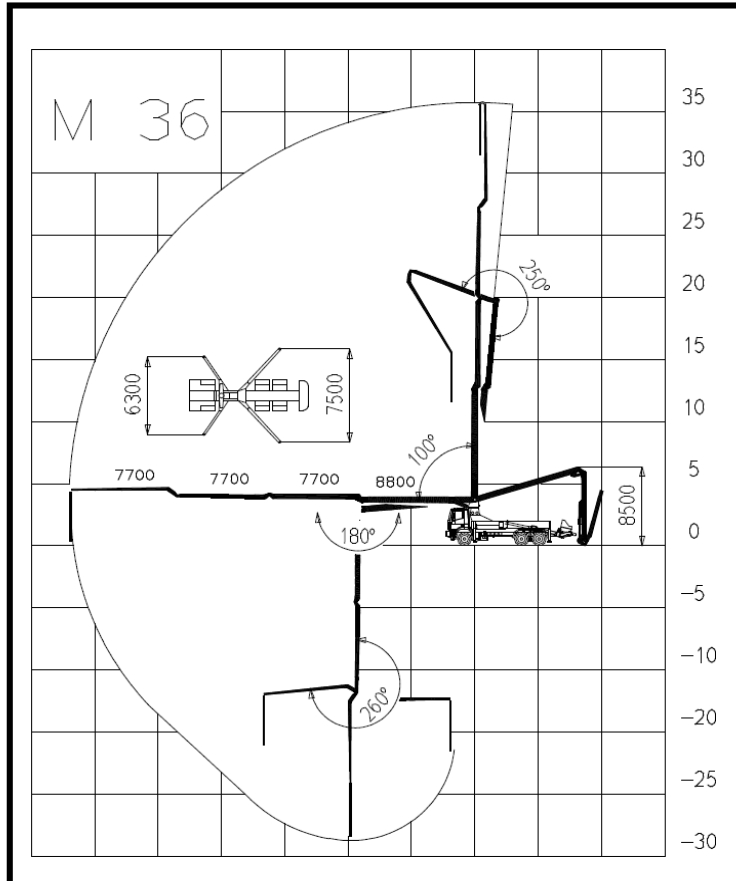
- Proportional radio remote control.
- Electric vibrator.
- Central greasing of the pumping group.
- Automatic lubrication by oil of the pistons.
- Syntetic plates for the outriggers.
- Light on the hopper.
- Accessories for washing.

Optional

- Complete pipeline in twin pipe.
- Continuous rotation of the boom.
- Independent diesel engine.

Main features

- One body frame to bear efficiently the torsional effects.
- Front and back hydraulic outriggers with minimum floor space.
- Boom 36 m at 4 sections, Z opening with pipeline 125 mm diameter.
- Control of the boom elements in multiple and proportional way.
- Proportional control of the concrete output.
- Safety valves directly flanged on all the cylinders of the boom.
- Power take off from the truck, optional with diesel engine separate.
- Concrete pipes with large radius elbows and without shaped pipes.



Boom M 36.4 DN125

Type of boom	5 sections at lower Z
Max. vertical height	35.6 m
Max. horizontal reach	32 m
Min. opening height	8.5 m

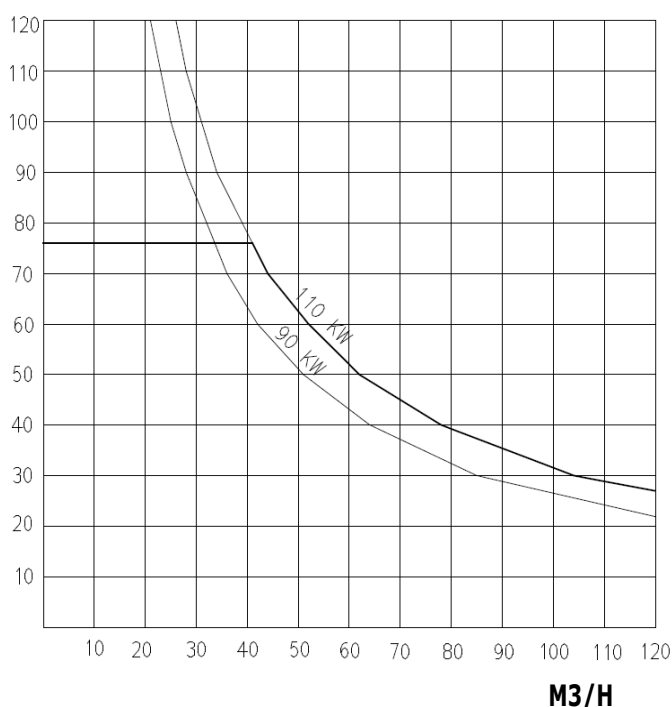
Rotation angles

1° element	100°
2° element	180°
3° element	250°
4° element	260°
Base rotation	370°

Technical data

Outriggers	4 hydraulic drive
Base stabilisation	6.5 / 7,5 m
Diam. Pipe line	125 mm
Lenght end hose	4 m
Rotation speed	0,3 rev./min
Max hydraulic pressure	350 bar
Cubic capacity hydraulic pump	30 cc
Voltage electrical plant	24 Volt

PRESSURE ON CONCRETE BAR



Pumping group 2320

Technical data

Production per hour	120 M3/H
Pressure on concrete	76 bar
Max cycles	24 min-1
Pumping cylinders	2 with "S" valve
Diam. Cylinders	230X2000 mm
Hopper capacity	0,5 M3
Speed mixer	20 min-1
Water tank	1200 L
Type hydraulic pump	pistons pump
Diam. Pipeline hopper way out	7"

Truck (minimum requirements)

Indicative total weight equipment 17 ton
 Assembling on chassis 3 axles wheelbase 4200
 or 4 axles wheelbase 4.200
 PTO ratio 1:1.26 -1:1,55 / 900—2000 Nxm