

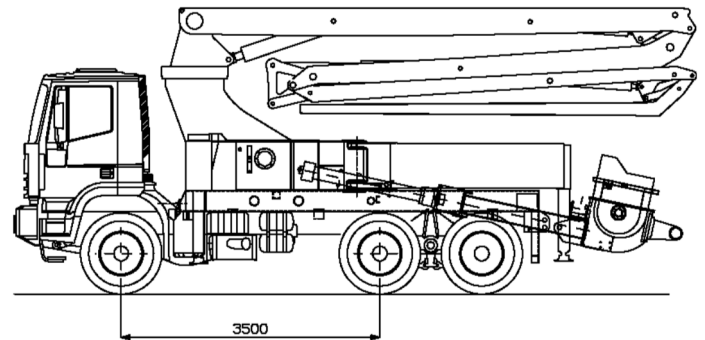


Pump M 27.4Z DN 125



Standard features

- Proportional radio remote control.
- Electric vibrator.
- Automatic grease lubrication system for pumping group.
- Oil automatic lubrication for pumping pistons.
- Syntetic plates for the four outriggers with storage.
- Light on the hopper.



Optional

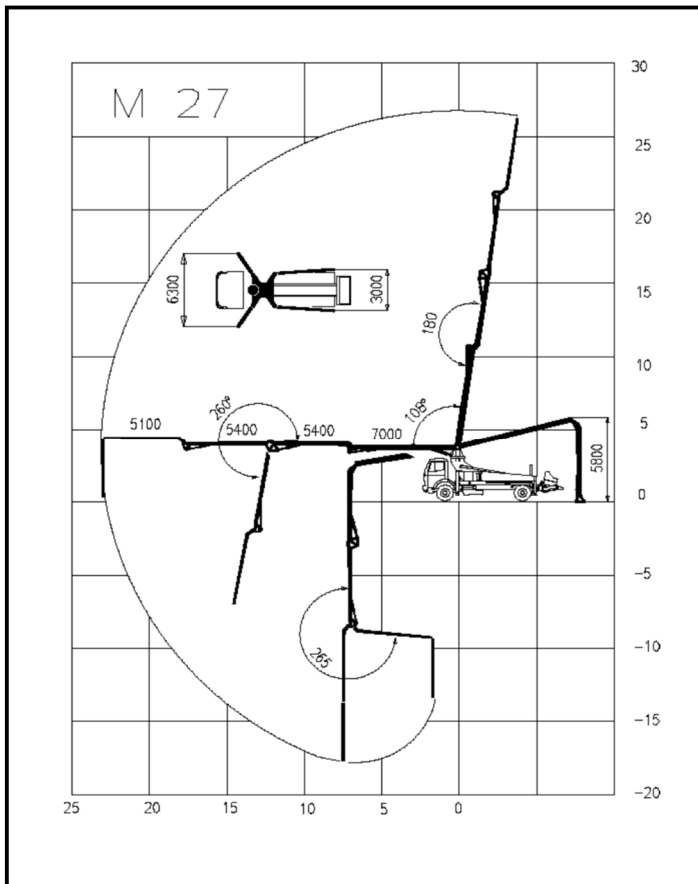
- Complete pipe in twin pipe
- continuous rotation of the boom
- Diesel engine independently.

Main features

- One body frame to bear efficiently the torsional effects.
- Front and back hydraulic outriggers with minimum floor space.
- Boom M 27 - 4 elements Z opening with pipeline 125 mm diameter.
- Control of the boom elements in multiple and proportional way.
- Proportional control of the concrete output .
- Safety valves directly flanged on all the cylinders of the boom.
- Power take off from the truck , optional with diesel engine separate.
- Concrete pipes with large radius elbows and without shaped pipes.



Pump M 27.4Z DN 125



Boom M 27.4 DN 125

Boom	4 sections
Vertical height	26.6 m
Max. horizontal reach	23 m
Min. opening height	5,8 m

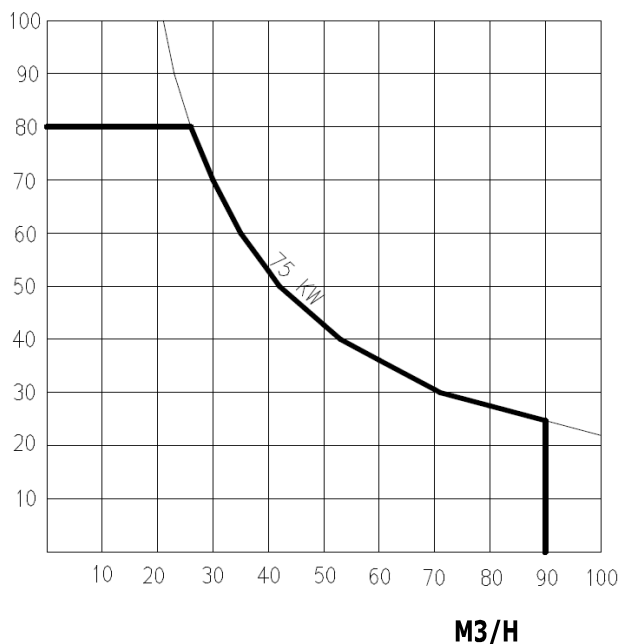
Rotation angles

1° element	108°
2° element	180°
3° element	260°
4° element	265°
Base rotation	370°

Technical data

Outriggers	4 hydraulic drive
Base stabilisation	6.3/ 3 m
Diam. Pipeline	125 mm
Length end hose	4 m
Speed of rotation	0,3 rev/min
Max hydraulic pressure	350 bar
Cubic capacity hydraulic pump	30 cc
Voltage electrical plant	24 Volt

PRESSURE ON THE CONCRETE BAR



Pumping group 2015 HP

Technical data

Production per hour	90 M3/H
Pressure on concrete	81 bar
Pumping cylinders	2 with "S" valve
Diam. Cylinders	200X1500 mm
Hopper capacity	0,5 M3
Water tank	700 L
Type hydraulic pump	Pistons pump
Diam. Pipe hopper way out	6"

Truck (minimum requirements)

Indicative total weight equipment 12 ton
 Assembling on frame 2 axles wheelbase 5000
 or 3 axles wheelbase 3500
 PTO ratio 1:1,26 -1:1,55 / 900-2000 N x m