



Pump M 32.5Z DN 125

Pumping group 2315

Engine PTO or Separate diesel Engine

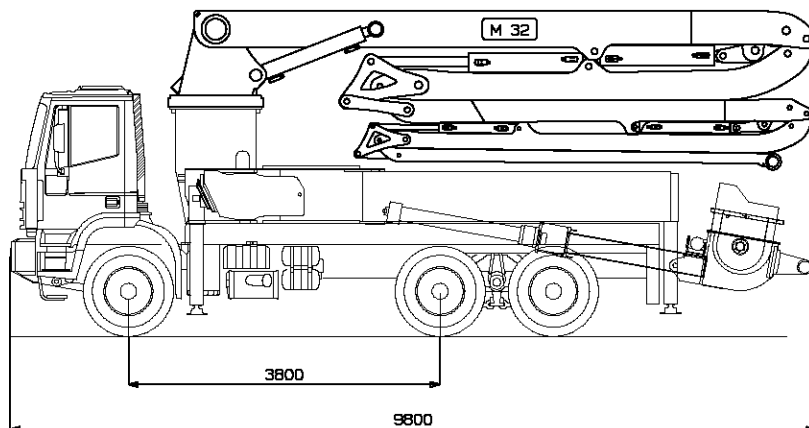


Standard features

- Proportional radio remote control.
- Electric vibrator.
- Automatic grease lubrication system for pumping group.
- Oil automatic lubrication for pumping pistons.
- Synthetic plates for the four outriggers with storage.
- Light on the hopper.
- Accessories for washing.

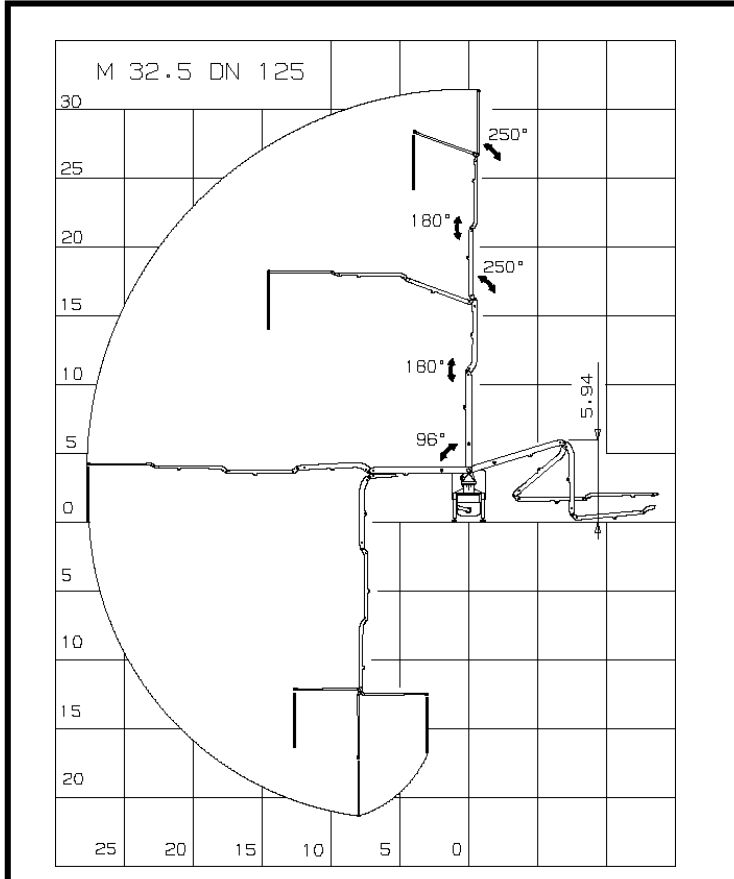
Optional

- Pipe in twin pipe.
- Continuous rotation of the boom.
- Diesel engine independently.



Main features

- One body frame to bear efficiently the torsional effects.
- Front and back hydraulic outriggers with minimum floor space.
- Boom 32 mt 5 sections, Z opening, pipe diam. 125 mm.
- Control of the boom elements in multiple and proportional way.
- Proportional control of the concrete output.
- Safety valves directly flanged on all the cylinders of the boom.
- Power take off from the truck, or with separate diesel engine.
- Concrete pipes with large radius elbows and without shaped pipes.



Boom M 32.5 DN 125

Type of boom	5 sez.
Vertical height	31.5 m
max. horizontal reach	27.6 m
Min. opening height	5.94 m

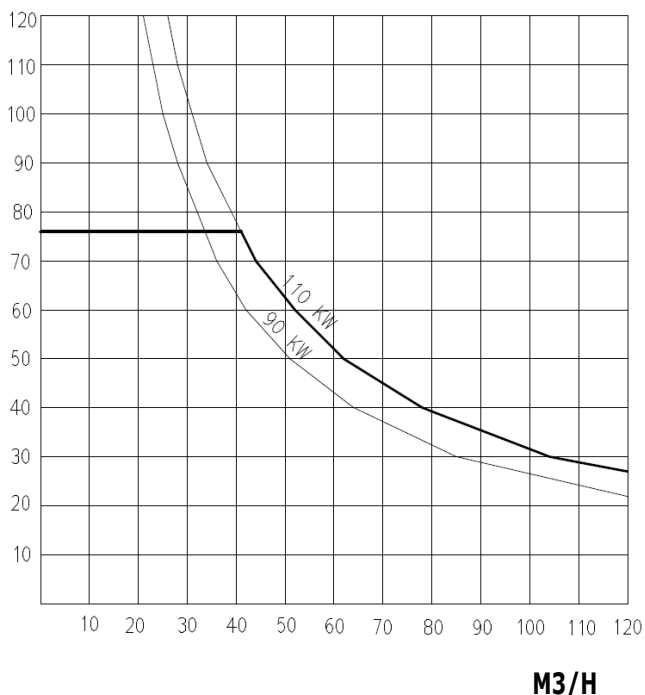
Angles rotation

1° element	96°
2° element	180°
3° element	250°
4° element	180°
5° element	250°
Rotation base	370°

Technical data

Outriggers	4 hydraulic drive
Base stabilisation	6.3 / 6.8 m
Diam. pipe	125 mm
Length end hose	4 m
Speed rotation	0,3 rev./min
Max hydraulic pressure	350 bar
Cubic capacity hydraulic pump	30 cc
Voltage electrical plant	24 Volt

PRESSURE ON CONCRETE BAR



Pumping group 2315

Technical data

Production per hour	130 M3/H
Pressure on concrete	76 bar
Cycles max.	35 min-1
Pumping cylinders	2 with "S" valve
Diam. cylinders	230X1500 mm
Hopper capacity	0,5 M3
Speed mixer	20 min-1
Water tank	1200 L
Type hydraulic pump	pistons pump
Diam. Pipe way out hopper	7"

Truck (minimum requirements)

Indicative total weight equipment	17 ton
Assembling on chassis	3 axles
Wheelbase	3800 or 4 axles wheelbase 4.200
PTO ratio	1:1,26 - 1:1,55 / 900-2000 N x m