



# Pump

## M 37.5 DN125

Pumping group 2320  
PTO engine or separate diesel engine  
chassis 3 or 4 axes

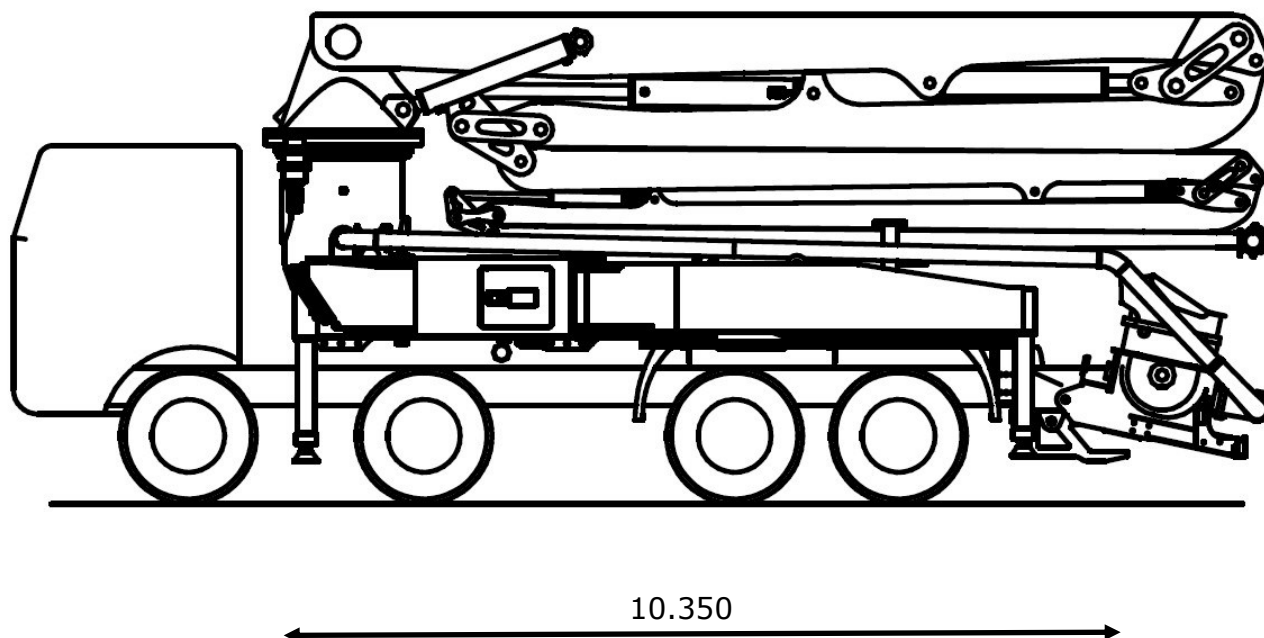


### Standard features

- Proportional radio remote control BUS CAN.
- Electric vibrator.
- Centralized lubrication system of the pumping group.
- Oil automatic lubrication of the pistons.
- Synthetic plates for the four outriggers.
- Light on the hopper.
- Accessories for washing.
- 7" display with operating and diagnostic parameters.
- Pipe line with tempered pipes

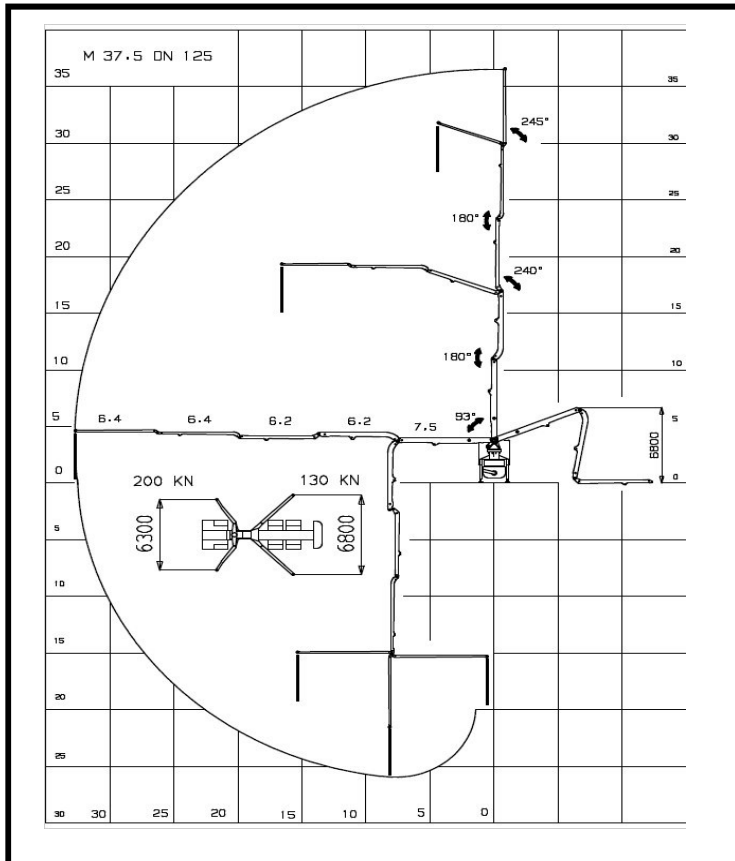
### Optional

- Complete pipeline in twin pipe.
- Continuous rotation of the boom.
- Independent diesel engine.



## Main features

- Frame to bear efficiently the torsional effects.
- Front and back hydraulic outriggers with minimum floor space.
- Boom 37 mt 5 sections with Z opening, diameter pipeline 125.
- Control of the boom elements in multiple and proportional way.
- Proportional control of the concrete output .
- Safety valves directly flanged on all the cylinders of the boom.
- Concrete pipes with large radius elbows and without shaped pipes.



### Boom M 36.5 DN125

Type of the boom	5 elements
Vertical height	36,5 m
max. horizontale reach	32,7 m
Opening height	6,8 m

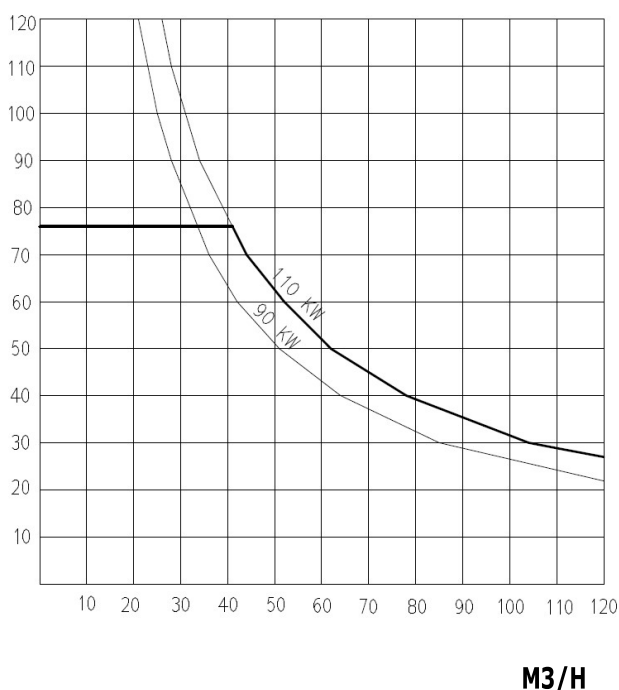
### Rotation angles

1° element	93°
2° element	180°
3° element	240°
4° element	180°
5° element	245°
Base rotation	370°

### Technical data

Outriggers	4 hydraulic drive
Base stabilisation	6.3 / 6.8 m
Diam. pipeline	125 mm
Lenght end hose	4 m
Rotation speed	0,3 rev/min
Max hydraulic pressure	350 bar
Cubic capacity hydraulic pump	30 cc
Voltage electrical plant	24 Volt

### PRESSURE ON CONCRETE BAR



### Pumping group 2320

### Technical Data

Production per hour	130 M3/H
Pressure on concrete	76 bar
Max cycles	26 min-1
Pumping cylinders	2 with "S" valve
Diam. Cylinders	230X2000 mm
Hopper capacity	0,5 M3
Speed mixer	20 min-1
Water tank	600 L
Type of hydraulic pump	pistons pump
Diam. Pipe hopper way out	7"

### Truck (minimum requirements)

Indicative total weight equipment 17 ton  
 Assembling on frame 4 axles  
 From wheelbase 4.200  
 PTO ratio 1:1,26 - 1:1,55 / 900-2000 N x m